

## Capability Services

The services of BTM Corporation improve the overall business performance of our customers by focusing on the areas that pose the greatest strategic and operational challenges, enabling them to accelerate their path toward convergence. They utilize the characteristics defined by the BTM Maturity Model™ to assess organizational maturity rapidly and leverage our pre-defined and on-demand management framework, applications and templates - collectively, the BTM 360™ product suite - to execute a concept to value lifecycle for our customers.

*BTM Capability Services* provide organizations a range of management capability specific services to assess, implement and optimize the management of business and technology for improved financial performance. All of our services are driven from our dedicated partnership mentality and confidence in helping customers maximize their financial and business value. The breadth and depth of offerings enable us to go from the “Board Room to the Data Center” to create leading edge methods that converge business and technology, based on our extensive research and development.

Our services include the following:

- **Assessment and Roadmap**

Baseline capability maturity and ranking as prescribed by the BTM Framework and BTM Maturity Model to create a “Maturity Advancement Plan” or (MAP) that will prioritize, direct, and describe the specific steps and business outcomes involved in increasing BTM Capability Maturity levels.

- **Value Analysis and Identification**

Conducted in collaboration with our customer, we analyze, identify, and quantify sources of value with specific recommendations that drive cost reduction, growth, efficiency, and effectiveness to improve savings and financial performance.

- **Capability Implementation**

Our “We Create, You Critique” approach is designed to accelerate implementation of a set of repeatable capabilities that converge business and technology management and is performed rapidly by leveraging BTM 360 to design, implement and optimize customer-specific capabilities, decision support information, automation and analytics.

- **Outsourcing and Value Delivery**

Includes a full spectrum of services that can be tailored to either co-source or provide complete outsourcing for the management of processes, analytics, and advisory services to get the immediate benefit of mature management capabilities as an attractive, interim and cost-effective alternative for select management processes.

These customer-specific services improve the strategic position, financial performance, and operational efficiency, as well as addressing the business model innovation needs, of Global 2000 organizations, government agencies and social businesses around the globe. Value-based and performance-driven, pricing begins at \$80k, per service.

### **BTM Global 2000™**

BTM Global 2000 provides solutions and services that improve the strategic position and financial performance of large private and public enterprises by institutionalizing-- management capabilities to accelerate business technology convergence. Our solution and service offerings utilize the characteristics defined by the BTM Maturity Model to assess organizational maturity rapidly, implement our on-demand and pre-defined management framework, applications and templates, and execute the concept to value lifecycle for our customers.

Visit: <http://www.btmglobal2000.com>

### **BTM Government™**

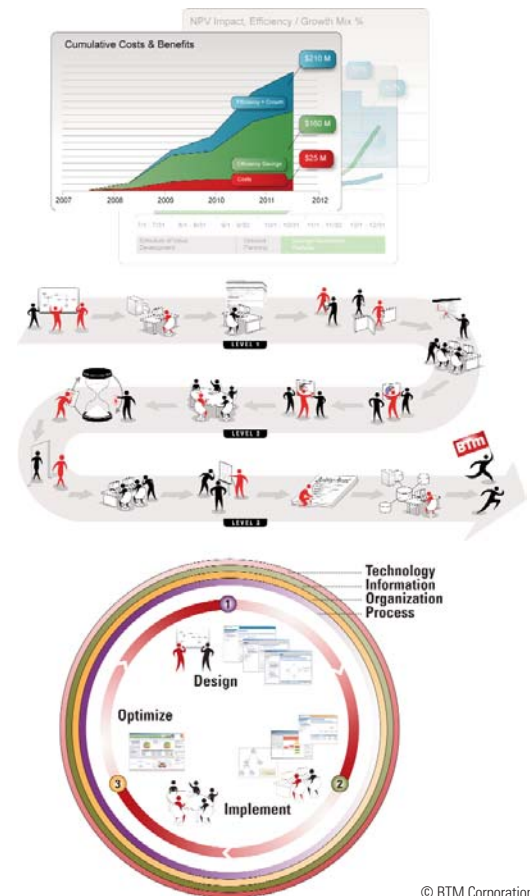
BTM Government helps improve the efficiency, effectiveness and financial performance of Government Agencies by institutionalizing management capabilities to accelerate business technology convergence. Offerings are driven by our Management Solution Centers which utilize the characteristics defined by the BTM Maturity Model to assess organizational maturity rapidly, implement our pre-defined management framework, software and templates, and execute the concept to value lifecycle for our customers.

Visit <http://www.btmgovernment.com>

### **BTM Agrim™**

BTM Agrim innovates social business models by converging business and technology. Our solutions create concept to commercialization of products and services by working with global 2000 companies, governments, NGO's and social entrepreneurs to address the needs of underserved emerging markets. Our Solution and Incubation Centers utilize our unique Innovation Engine to create collaborative environments that allow our customers and partners to focus resources and attention on their core business initiatives.

Visit <http://www.btmagrim.com>



© BTM Corporation